



Water Supply for Community Climate Adaptation

Presented by Paige Thurston & Wendy Booth
90th Annual AKBLG AGM & Convention
Friday April 21, 2023
3:50 pm - 4:20 pm

Land Acknowledgement

Living Lakes Canada's water stewardship work takes place on many Indigenous territories across Canada. In the Columbia Basin we acknowledge the traditional, ancestral, and unceded territories of the Ktunaxa, Lheidli T'enneh, Secwépemc, Sinixt and Syilx Nations.



Session Overview

- Introductions
- About Living Lakes Canada
- Climate Impacts
- Why Monitor?
- Columbia Basin Water Monitoring Framework
- Columbia Basin Water Hub
- Working Together



Introductions



Wendy Booth
*Local Government
Consultant*



Paige Thurston
*CBWMF Program
Manager*

Our Mandate

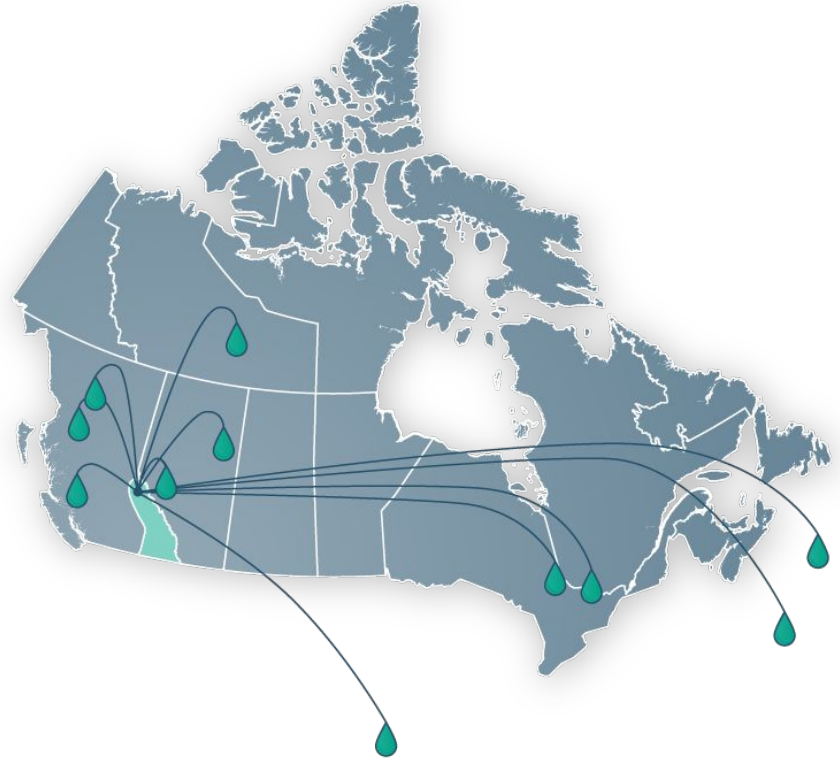


Living Lakes Canada
bridges the gap between science and
action to foster community-based
water stewardship.

Leadership in Water Stewardship

Regional

- Columbia Basin Water Monitoring Framework
- Columbia Basin Water Hub
- Columbia Basin Groundwater Monitoring Program
- Eastern Slopes Aquatic Monitoring Collaborative
- Foreshore Integrated Management Planning
- High Elevation Monitoring Program
- Kootenay Watershed Science



National

- Applied Reconciliation
- Biomonitoring Programs
- Member of BC and Federal Water Coalitions
- National Lake Blitz

Our Impact

- 145 lakes across Canada monitored
- 12 of Canada's 25 major watersheds studied
- 314 creeks and rivers sampled
- 42 Indigenous partners trained
- 750+ volunteers engaged in our work



Climate Impacts in the Columbia Basin

- Typical hydrologic patterns for our region
- Changes to temperature and precipitation
- Impacts to hydrology
- Data deficits

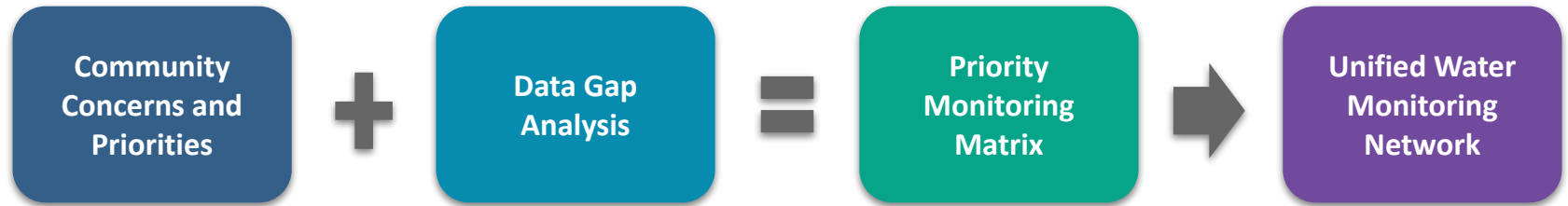


Why Monitor?

- Contribute to analysis and modelling
- Data-driven decision making
- Sustainable approach to water management
- Climate adaptation and stewardship
- Helps advance the UN Sustainable Development Goals



Columbia Basin Water Monitoring Framework

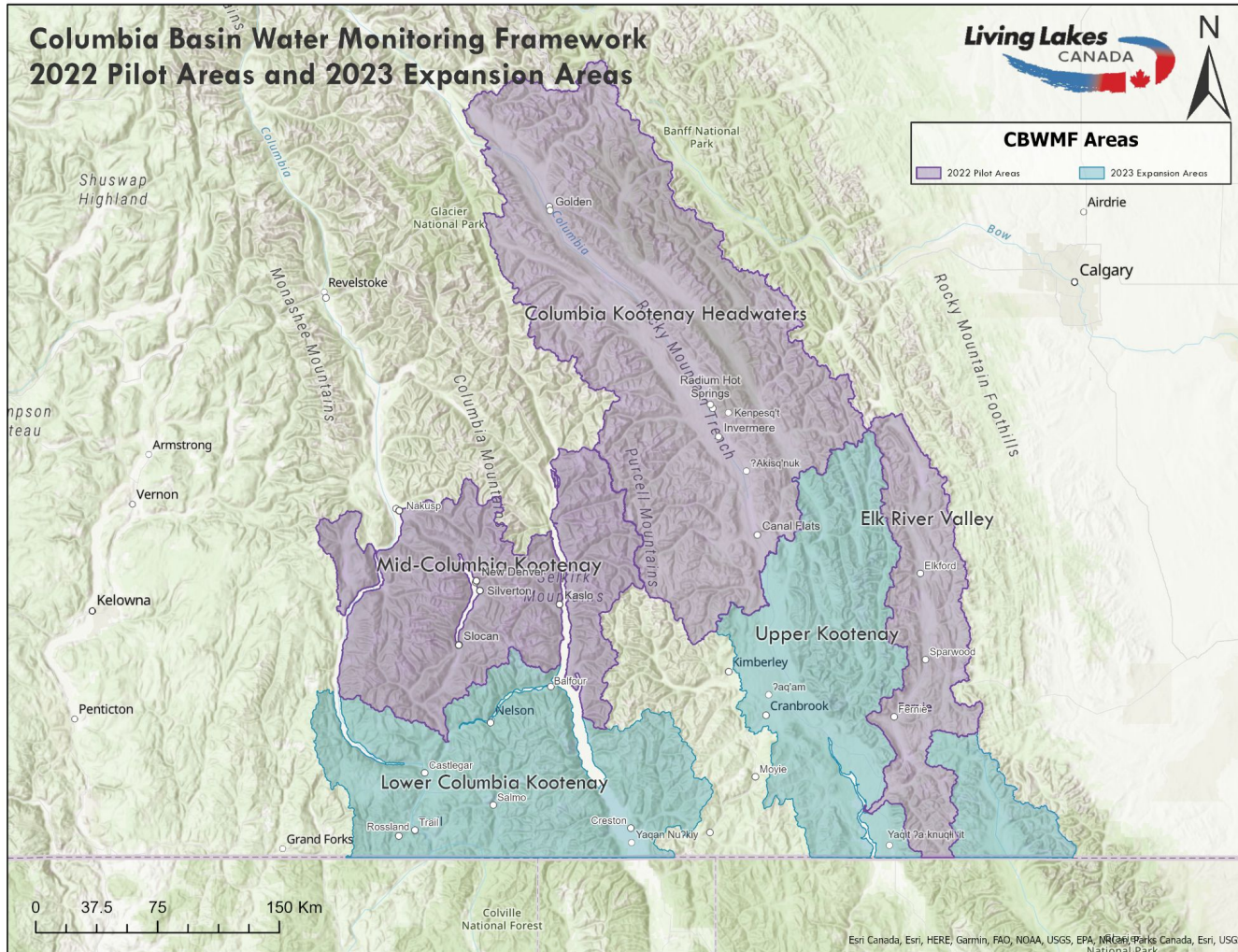


Columbia Basin Water Monitoring Framework 2022 Pilot Areas and 2023 Expansion Areas



CBWMF Areas

- 2022 Pilot Areas
- 2023 Expansion Areas

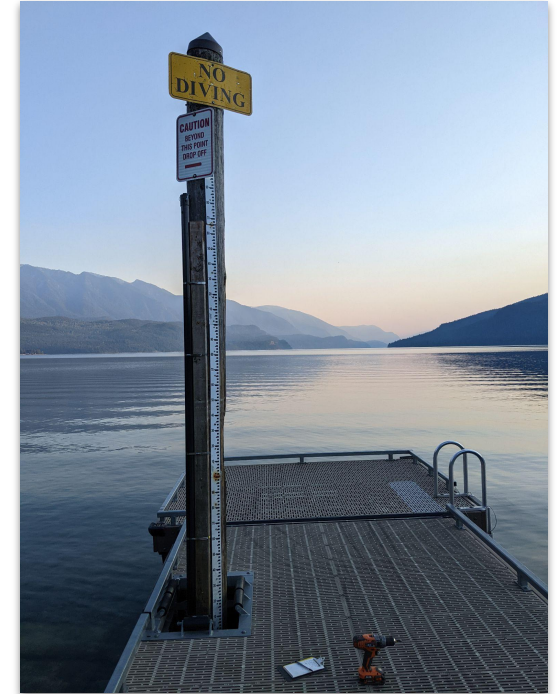


Esri Canada, Esri, HERE, Garmin, FAO, NOAA, USGS, EPA, NRCan, Parks Canada, Esri, USGS National Park



What are we monitoring?

- Streamflow
- Lake Level
- Groundwater Level
- Weather and Climate
- Water Quality
- Water Temperature
- Biomonitoring
- High Elevation



Columbia Basin Water Hub

A central place to store and access the data and information about water in the Columbia Basin:

- Officially launched March 2021
- 300+ datasets
- 47 contributors and growing

Visit cbwaterhub.ca



Importance of Open Data

- Data Access and Transparency
- Support Analysis and Modelling
- Preservation of Data
- Coordination of Activities



Our Contributors

- Stewardship Groups
- Municipal Governments
- Regional Districts
- Academia
- Industry
- Consultants
- Community Members



Connections with Local Government

- Decisions:
 - Land use
 - Development
 - Water usage
 - Conservation and stewardship
- Climate impacts and adaptation
- Using available resources to support decision making
- Help us understand your needs and questions



How we can work together

- Contribute to the Columbia Basin Water Hub
- Use data to inform decision making
- Help us to identify data gaps and local needs
- Support and advocate for water monitoring and stewardship in your jurisdiction



Thank you! Questions?

Contact us

- **Wendy Booth**
eklrg@livinglakescanada.ca
- **Paige Thurston**
paige@livinglakescanada.ca

Learn more

www.livinglakescanada.ca

Follow us

